

Timing Mode: **REPEAT CYCLE, OFF/ON DELAY**

Category: **SOLID STATE TIMER**

Series: **TH3KD**

## CUBE SOLID STATE, 1 AMP, SEPARATE TIME PERIODS



### TH3KD Timers

TH3KD timers are solid state output units with digital timing and dissimilar "Off/On" cycle times. The TH comes in a 2" square case.

Ease of installation and hook-up is a primary design benefit. All models with integral time adjustment knob or factory-fixed time require only three connections.

Units with external time adjustment have two additional terminals for the resistor or potentiometer.

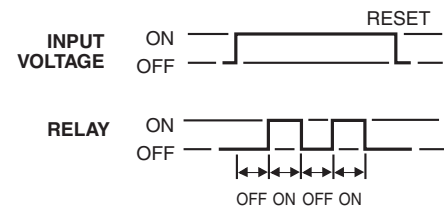
### Timing Mode

Application of input voltage to the timer starts the "Off" time delay.


At the end of the "Off" time delay, the "On" time delay starts.

At the end of the "On" time delay, the load is again de-energized, the timer returns to the "Off" time delay, and the cycling continues as long as input voltage is applied.

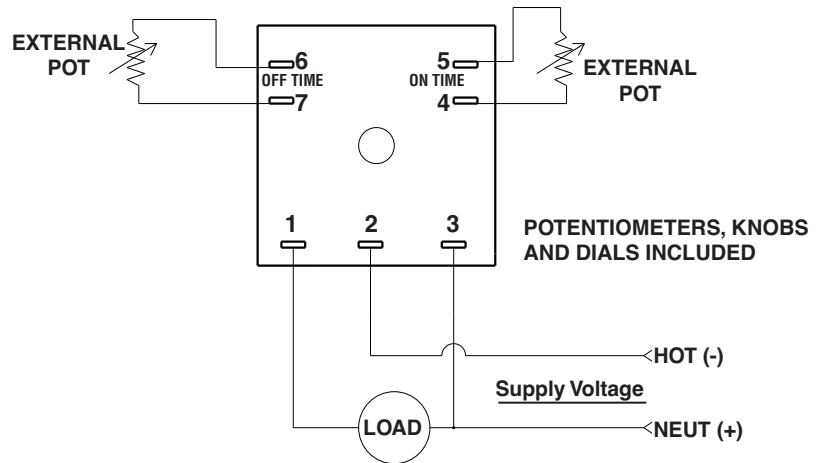
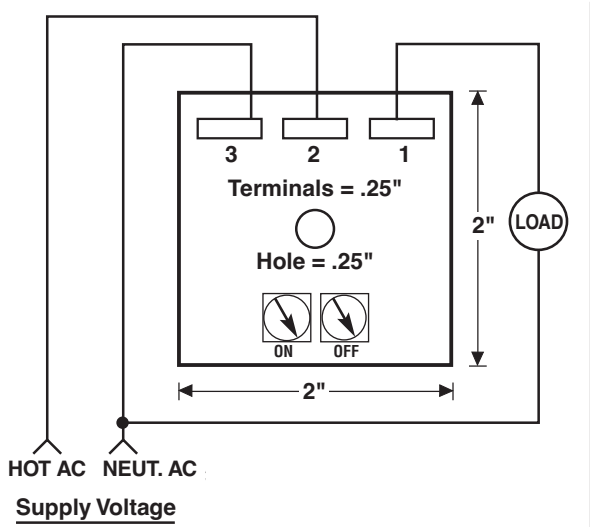
Removal of the input voltage resets the timer.



## FEATURES

- Digital timing, solid state output
- 1 Amp current load handling
- 10 Amps single-cycle surge handling
- 6 Operating voltages – three AC and three DC
- $\pm 0.1\%$  Repeat accuracy
- Virtually unlimited time ranges
- Factory-fixed or variable timing adjustment
- Totally encapsulated for protection from harsh environments
- Single screw mounting through center mounting hole
- Standard 6.35mm (0.25") quick connect blade terminals
- Three terminal connections allow convenient substitution for other manufacturers' timers
- 100% Operational testing before shipping
-  RoHS compliance available

## BASIC WIRING AND DIMENSIONS



## SPECIFICATIONS

**Input Voltages:** VAC: 24, 120 or 230, 50/60Hz  
VDC: 6, 12 or 24

**Repeat Accuracy:**  $\pm 0.1\%$  under fixed conditions

**Timing Ranges:** 0.1 sec. to 24 hours (1 sec., 10 sec., 100 sec., and 1000 secs. are standard.)  
*Special time ranges available upon request*

**Reset/Recycle Time:** 200 milliseconds

**Tolerances:** Fixed:  $\pm 10\%$  of nominal time  
*(optional:  $\pm 5\%$ ,  $\pm 1\%$ )*

**Recycle Effect:** None

**Temperature Ranges:**

*Storage: -40°C to +85°C*

*Operating: -25°C to +65°C*

**Life Expectancy:**

No predictable failure if used within operating parameters

**Protection:**

*Transient Protection: 18 joules*

*Dielectric Strength: 1800V RMS 60Hz*

**Power Requirement:** 0.25 watts max.

**Weight:** 3 oz. (85g) maximum

**Load Current:** 1 amp continuous, 10 amps single-cycle surge

**Time Cycle Interrupt:** Resets timer to original state  
**(Input Voltage Break)**

## OPTIONS SELECTION

Mode of Operation	Series	Input Voltage	Examples of Time Ranges	Time Adjustment Method
<b>Repeat Cycle Off/On Delay</b>	<b>TH3KD</b>	1 120 VAC 50/60 Hz	<b>VARIABLE TIME PERIODS</b> <b>0001</b> .1 to 1 sec. <b>0010</b> .1 to 10 sec. <b>0100</b> 1 to 100 sec. <b>1000</b> 10 to 1000 sec. Any range up to 24 hours available on special order.	<b>A</b> Variable, integral, knob on timer <b>B</b> Variable, with external potentiometer supplied <b>C</b> Fixed, internal, factory set <b>D</b> Fixed, external, resistor adjust
		2 230 VAC 50/60 Hz		
		3 24 VAC 50/60 Hz	<b>FIXED TIME PERIODS</b> Specify in seconds (S) or hours (H) Examples: 400S is 400 seconds 05H5 is 5.5 hours Show off/on times separated by a slash.	
		4 24 VDC		
		9(6) 6 VDC		
		7 12 VDC		

**EXAMPLE**

**TH3KD 3 60S/100S C C**

This is a "TH" series timer, Repeat Cycle Off/On Delay, 24 volt AC, 60 second fixed off and 100 second fixed on; internal, factory-set time periods.

*Specifications subject to change without notice.*